



EAGLE NOTES

Early College updates, reminders, and information



2021-22

Find out more about events [HERE](#)

JANUARY

- 1/7 New Student Orientation
- 1/10 CSI classes begin
- 1/17 Martin Luther King Jr Day. Campus Closed
- 1/26 Transfer Fair

FEBRUARY

- 2/21 President's Day. Campus Closed
- 2/7- 3/4 Higher Education Tour
 - Treasure Valley 2/ 7-25
 - Magic Valley 2/21-3/4

MARCH

- 3/4 Registration Deadline for Spring , Tri 2 ,Tri 3 and yearlong courses
- 3/21-25 Spring Break
- 3/14 Degree-seeking registration for Summer and Fall opens
- 3/21 Non degree seeking registration opens

APRIL

- 4/1 Tri 3 Registration Deadlines

May

- 5/2-5 CSI finals week
- 5/30 Memorial Day. campus Closed

January



Early College Corner

(208) 933-2320 | dualcredit@csi.edu

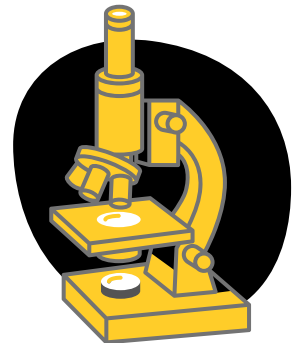
Don't Double Dip!

As the spring semester begins, many of us are helping students register for new classes. Often these students do not remember if they already have a Dual Enroll account. PRO TIP: Always call and check before creating a new account! If a student has simply forgotten a previous account and creates multiples THEY WILL NOT BE ABLE TO REGISTER. The system gets confused and freezes everything until the duplicate accounts are merged. We are happy to check for you. Call us first.

Department Spotlight

Biology

Have a student interested in biochemistry, bioinformatics, biotechnology, botany, molecular biology, conservation biology, ecology, genetics, marine biology, microbiology or zoology? They can start their path at the CSI biology department and lay the foundation for future academic and career success. Transfer advising available.



Scholarships

Check out our scholarship page, including biology specific options [HERE](#). Always check with program instructors for new opportunities as well.

Transitioning Out of High School?

- Explore your college options, Check out CSI's majors, and programs [HERE](#).
- Schedule campus visits. Group or individual tours can be booked [HERE](#)
- Watch for scholarships. Find a list of scholarships [HERE](#)
- Check out CSI Workforce or apprenticeships and employment options [HERE](#).
- Learn more about Bridge to Success support and programs [HERE](#)

